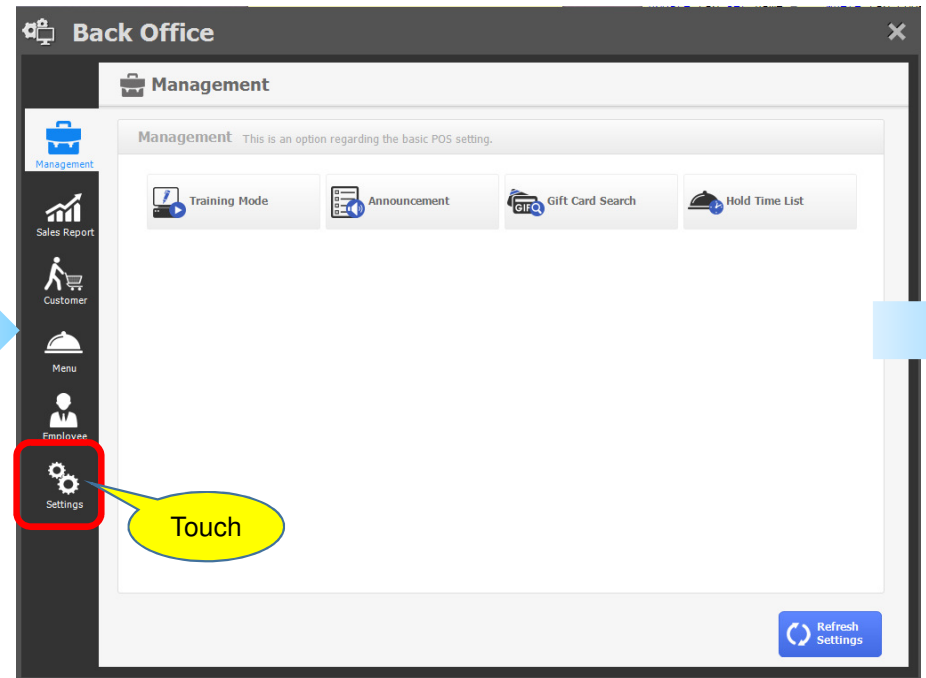
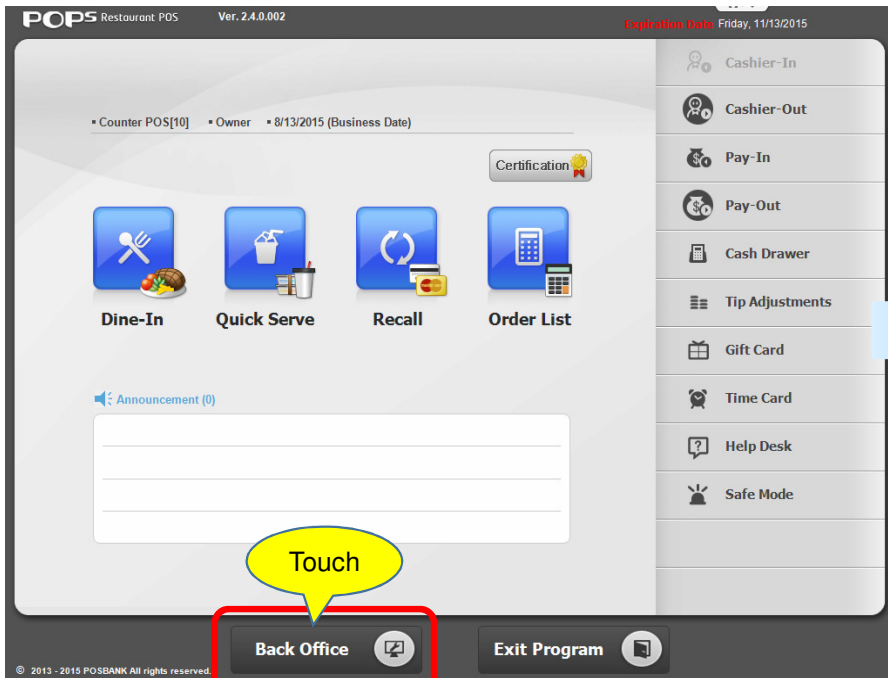
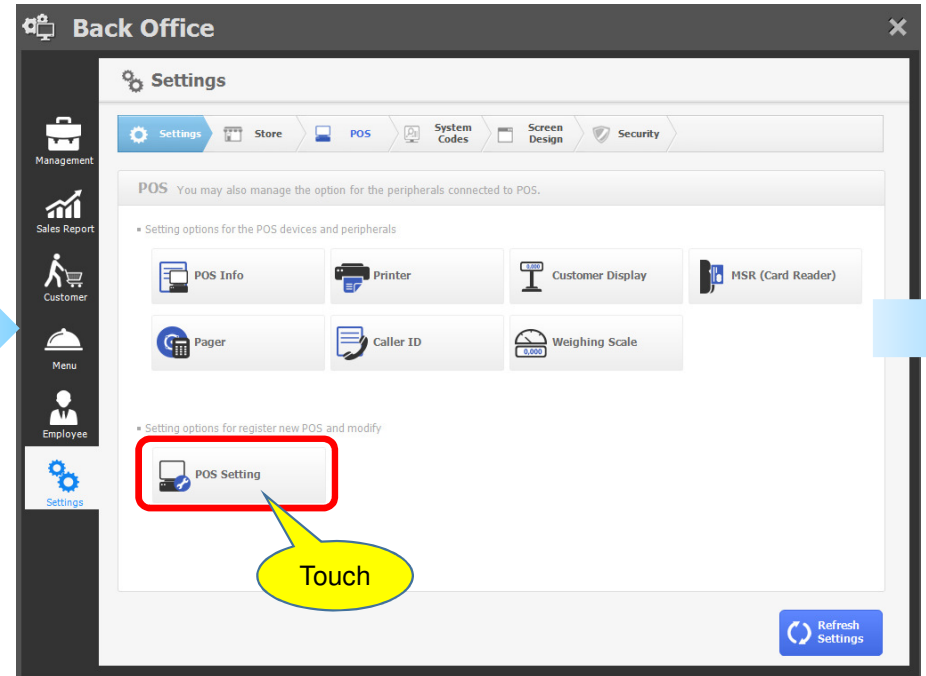
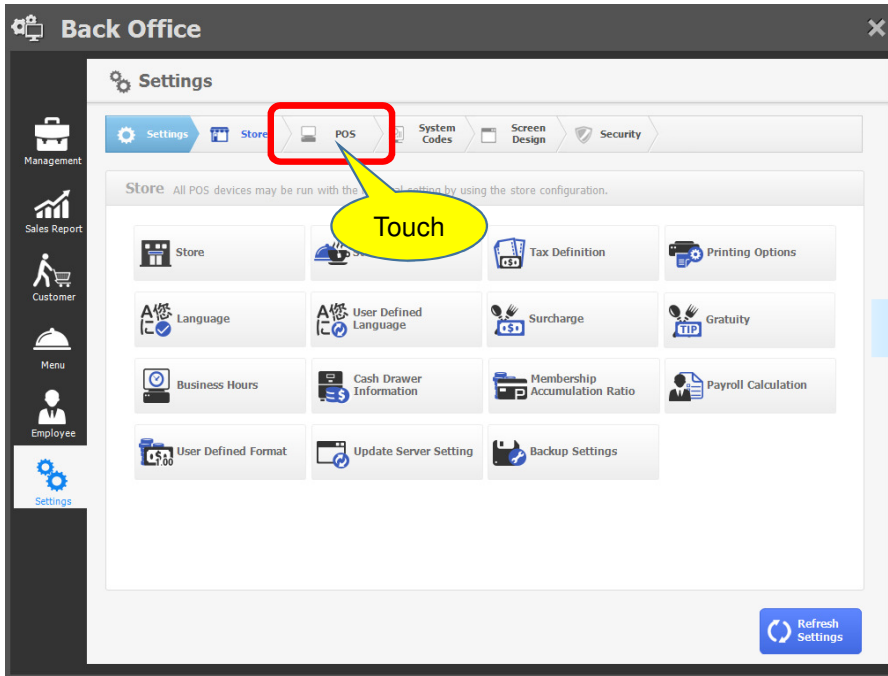


1st - Please change the option of "POS Setting"



1st - Please change the option of "POS Setting"



1st - Please change the option of "POS Setting"

The screenshot shows the 'POS Setting' application interface. It features a table on the left with columns 'POSID' and 'POS Name'. The table contains two rows: '10 Counter POS' and '11 Water Station'. The '10 Counter POS' row is highlighted with a red box and a callout '1. Touch what you want'. To the right of the table is a form for editing the selected POS. The form has several sections: 'POS Name' with a text field containing 'Counter POS' and a callout '4. Touch'; 'POS Model' with a dropdown menu showing 'POSBANK IMPREX'; 'POS Serial #' with a text field containing '12345'; and 'Used For' with a dropdown menu showing 'Counter'. Below these is a 'Security Options' section with two radio buttons: 'Login Once For Startup' (unselected) and 'Login For Each Security Role' (selected). The 'Login For Each Security Role' option is highlighted with a red box and a callout '3. Touch'. At the bottom of the form are 'Add' and 'Save' buttons, with the 'Save' button highlighted by a red box and a callout '2. Touch'. A red box around the top right corner of the application window contains a close button (an 'X' icon) with a callout '4. Touch'. At the bottom left of the application window, there is a message icon and the text 'You may edit or add a POS.'

POSID	POS Name
10	Counter POS
11	Water Station

Security Options

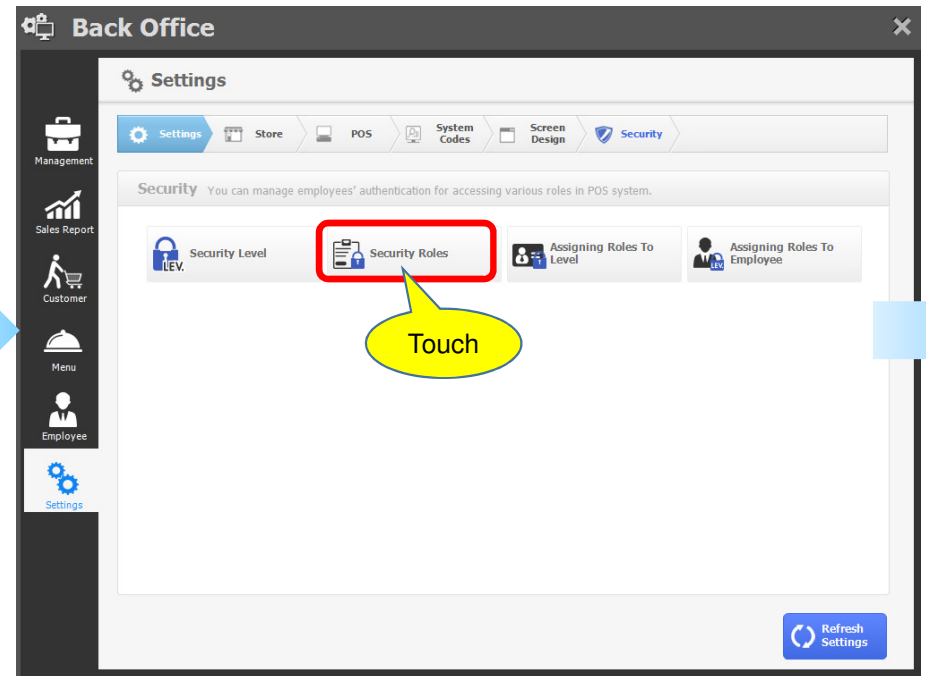
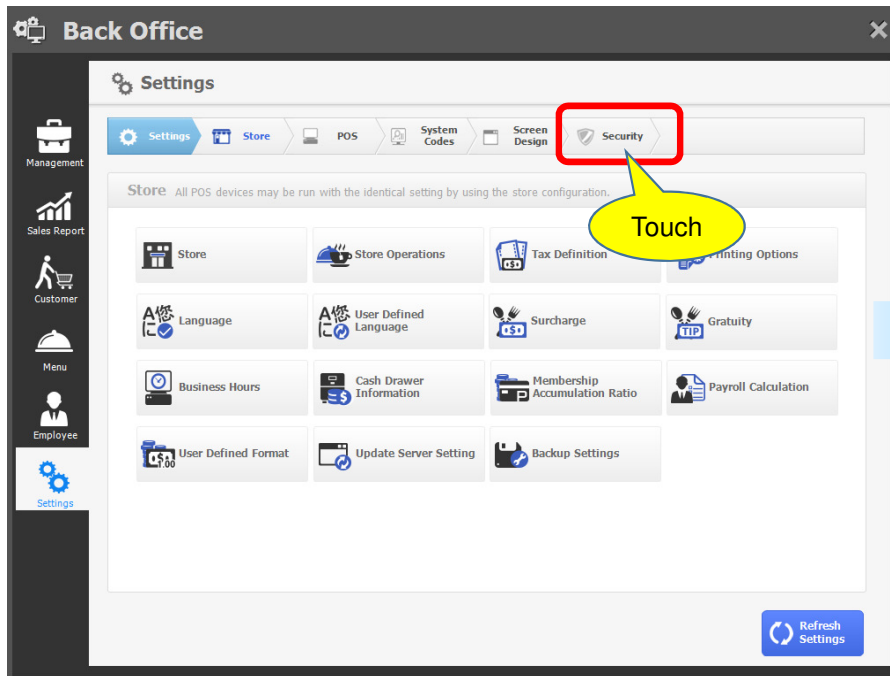
- Login Once For Startup
- Login For Each Security Role

Buttons: Add, Save

Message: You may edit or add a POS.

A blue button with a white circular arrow icon and the text 'Refresh Settings'. A callout bubble points to the button with the text 'Touch'.

2nd - Please change the option of "Security"



2nd - Please change the option of "Security"

Select	Roles
<input type="checkbox"/>	Discount
<input type="checkbox"/>	End Of Day
<input type="checkbox"/>	Inventory Adjust
<input type="checkbox"/>	Issue Card
<input checked="" type="checkbox"/>	Main Screen - Dine-In
<input type="checkbox"/>	Main Screen - Exit Program
<input checked="" type="checkbox"/>	Main Screen - Take-Out
<input type="checkbox"/>	Main Screen - Tender
<input type="checkbox"/>	Management - E
<input type="checkbox"/>	Management - Employee Clock In/Out
<input type="checkbox"/>	Management - Gift Card Search
<input type="checkbox"/>	Management - Market Price Menu

Back Office

Settings

Security

Assigning Roles To Level

Touch

Refresh Settings

2nd - Please change the option of "Security"

Assigning Roles To Level

Security Level

- Cashier
- Driver/Reception
- Manager
- Owner
- Server

Select

- Main Screen - Dine-In
- Main Screen - Take-Out

Roles

Save

! You may assign roles to the security levels.

Assigning Roles To Level

Security Level

- Cashier
- Driver/Reception
- Manager
- Owner
- Server

Select

- Main Screen - Dine-In
- Main Screen - Take-Out

Roles

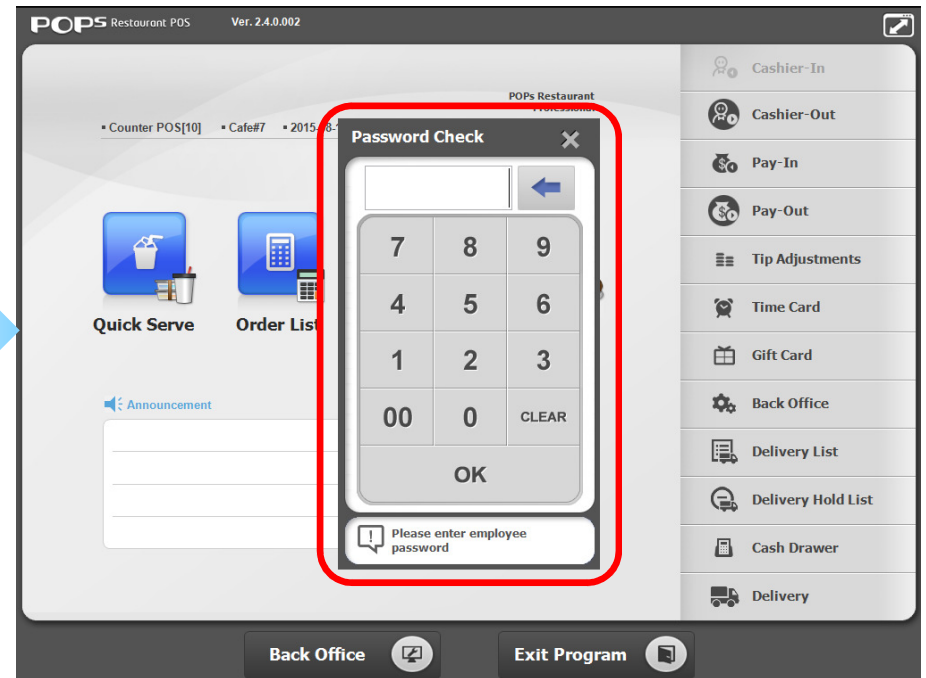
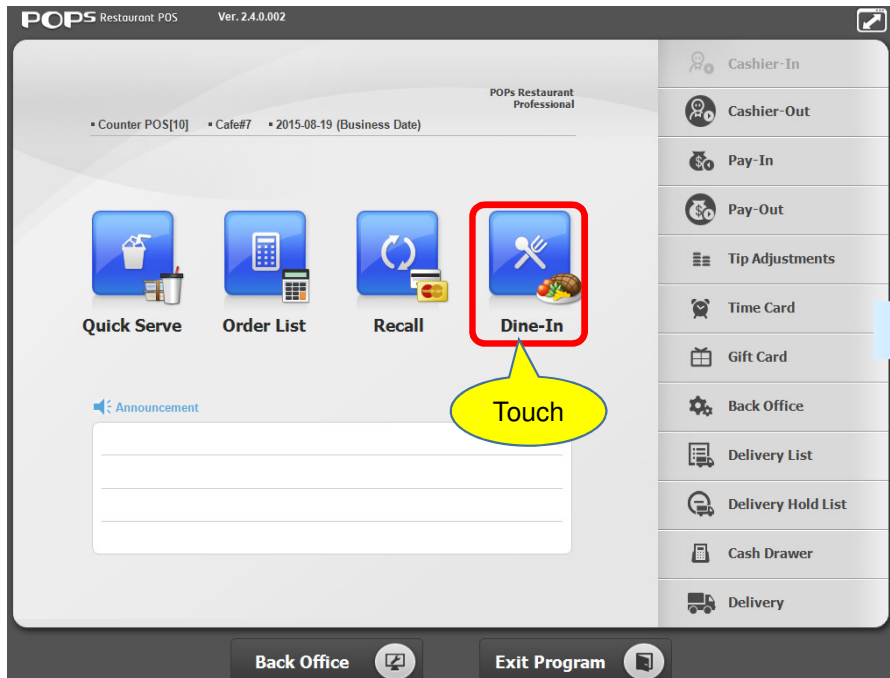
Save

! You may assign roles to the security levels.

Refresh Settings

Touch

Effect



Effect

