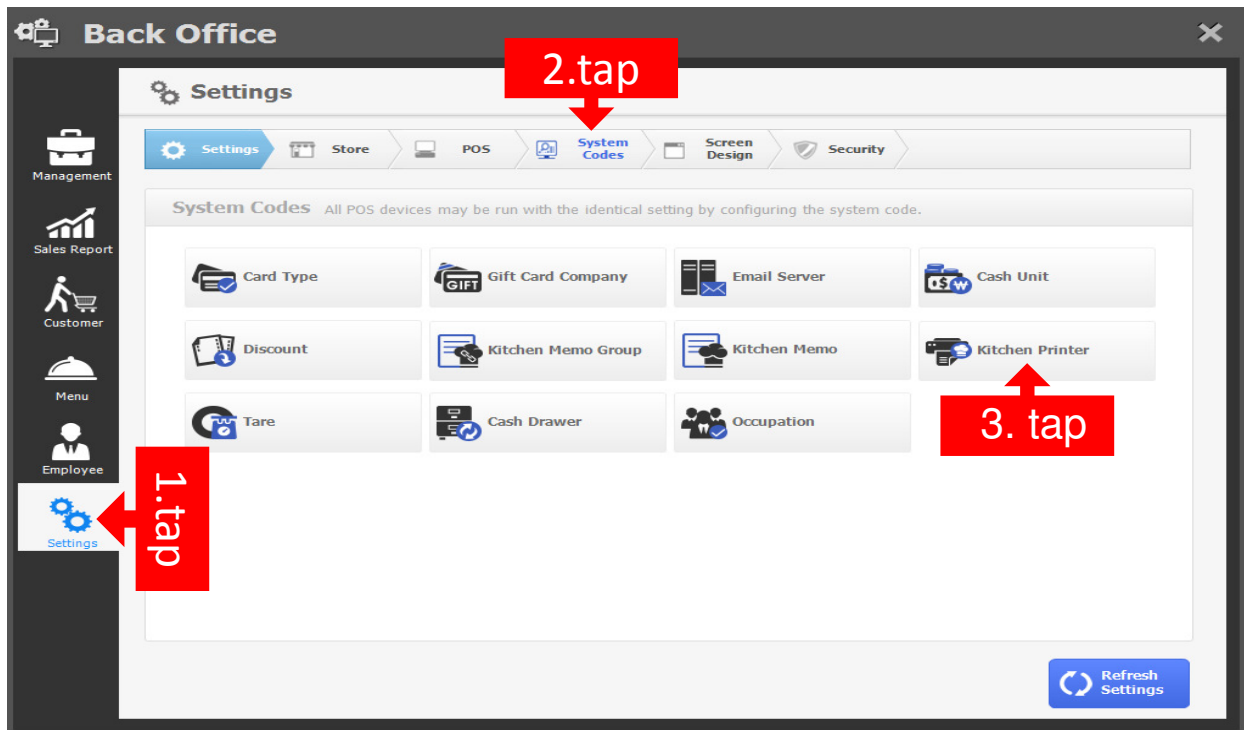
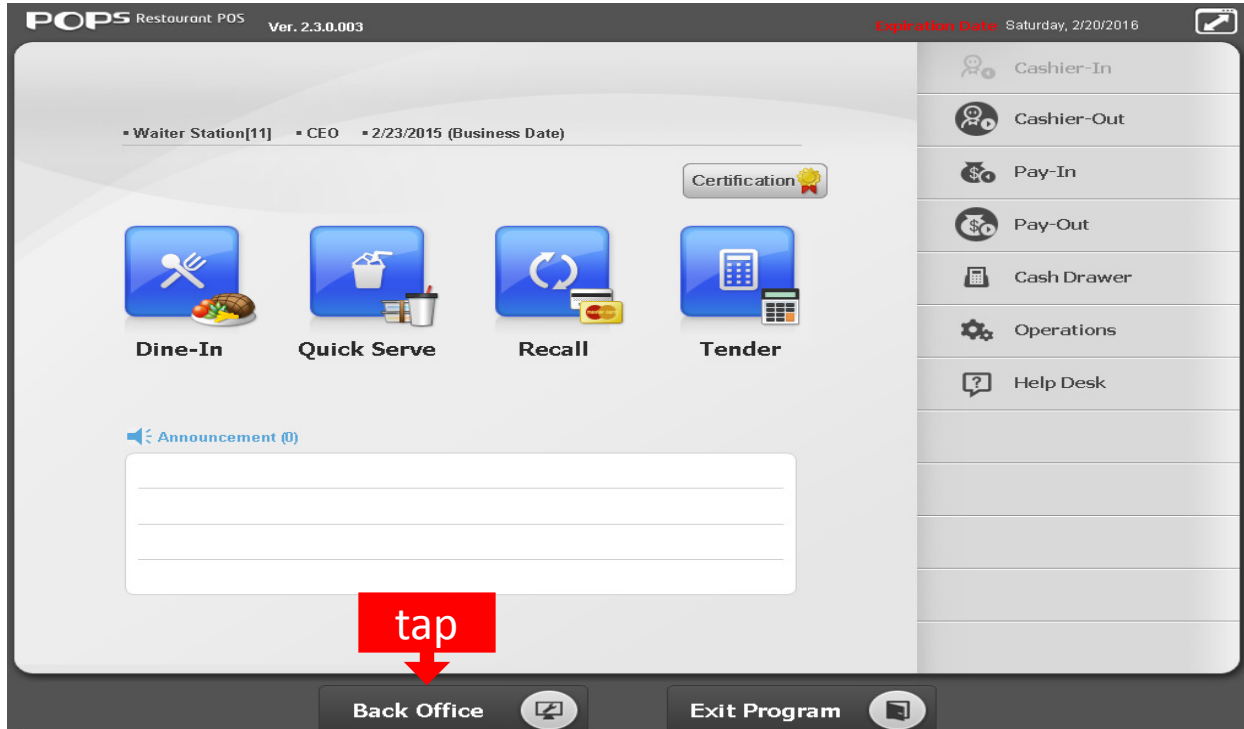
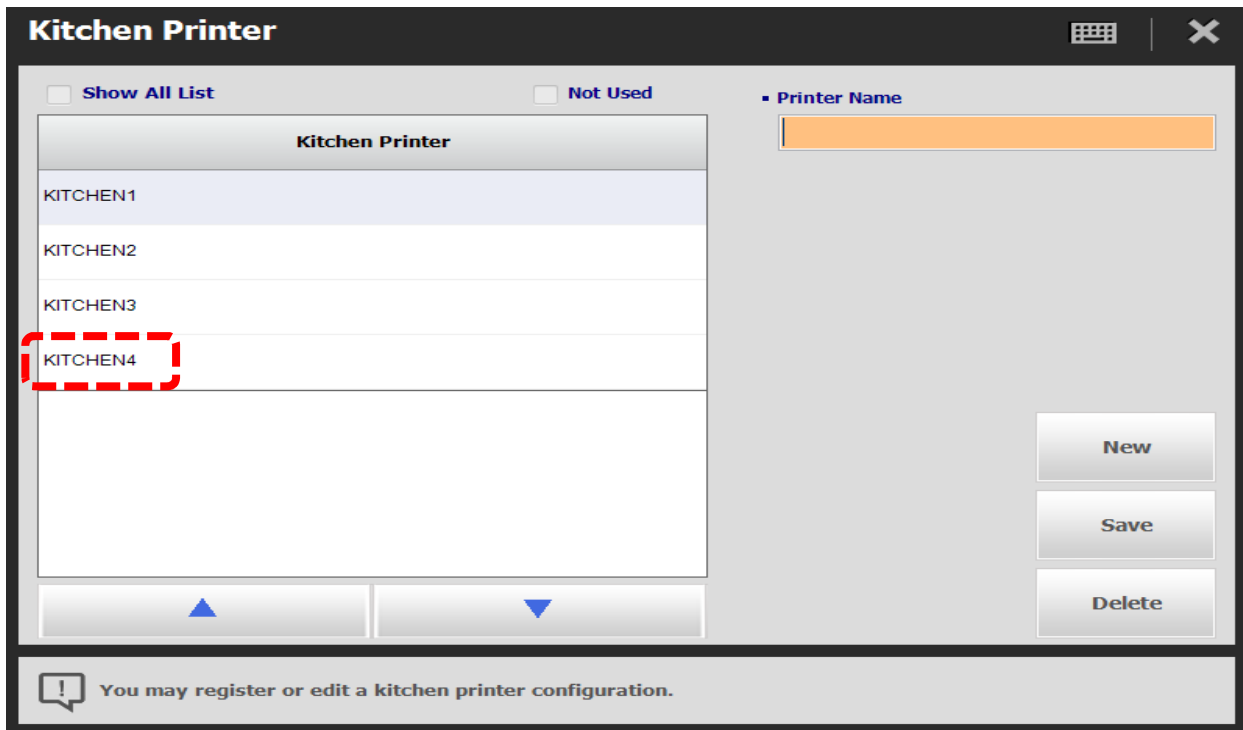
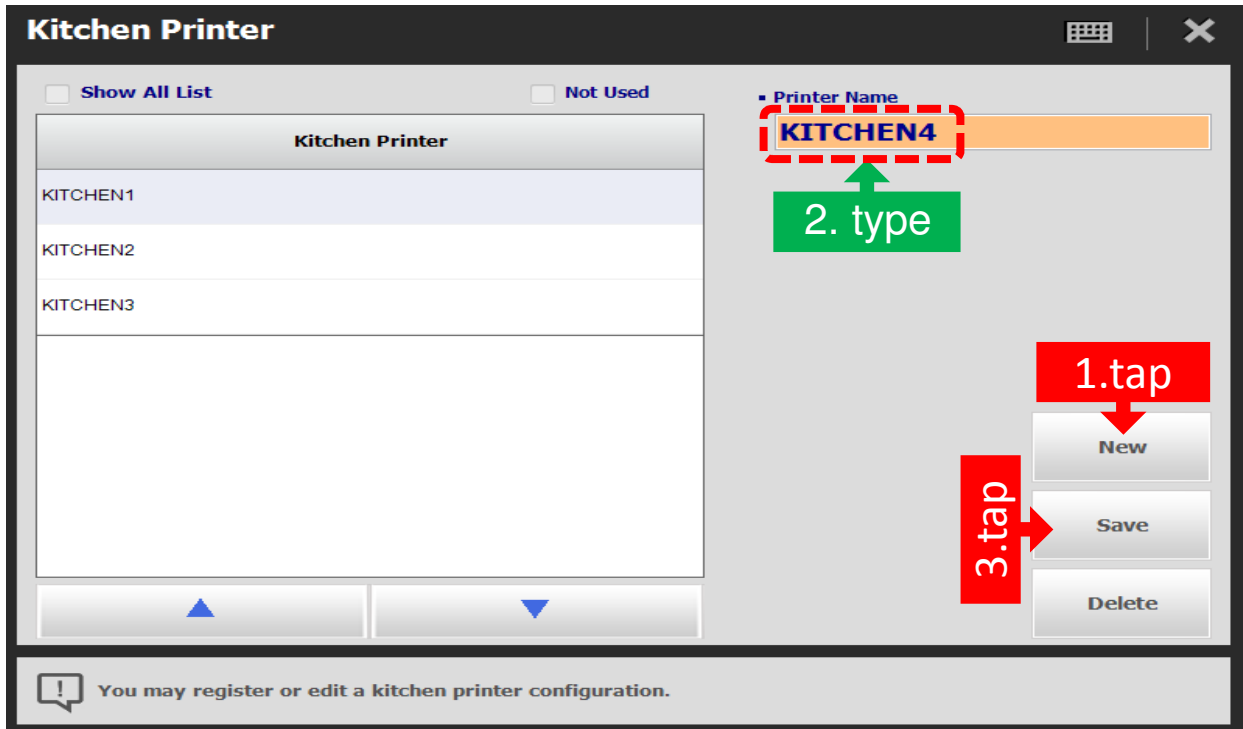


# QUICK GUIDE

( To Add a Kitchen Printer )





### Back Office

**Menu** You may set-up the overall option for menu.

**Menu (Main)**

**1.tap** → **Menu** (Sidebar)

**2.tap** → **Menu Registration** (Main Content)

Menu (Main) options: Menu Category, Menu Registration, Combo Menu, Modifier Configuration, Menu User Defined Type

Menu (Secondary) options: Pricing Controls, Market Price Menu

Refresh Settings

**UTILIZATION !**

### Menu Registration

Menu Category	Count
Appetizers & Salads	15
Beverages	18
Burger_Sandwich	12
Desserts	20
Entrees	25
Lunch Special	16
Pasta_Noodles	12

**1.tap** → Entrees

**2.tap** → Filet Mignon

**3.tap** → KITCHEN4

**4.tap** → Save

**Menu Registration Details:**

- Menu Category: Entrees
- Menu Name: Filet Mignon
- Unit Price: 11.00
- Tax Type: Tax
- Menu Cost: 0.00
- Status: Available
- Inventory Unit: [Image]
- Discount Applied:
- Point Applied:
- Market Price Menu:
- Open Price:
- Kitchen Printer:
 

Use	Printer Name
<input type="checkbox"/>	KITCHEN1
<input type="checkbox"/>	KITCHEN2
<input type="checkbox"/>	KITCHEN3
<input checked="" type="checkbox"/>	KITCHEN4

Buttons: Menu Copy, New, Save, Delete